



# Newcastle University

**Study Abroad Programme 2024/25**

**Application Guidelines and Information**



# Contents

- 2 Introduction and Key Terms
- 3 Areas of Study
- 4 Application Guidance
- 7 Timeline
- 10 English Language Requirements
- 11 Visa Regulations
- 12 Arrival to Newcastle
- 14 Accommodation
- 15 Why Newcastle?



# Introduction

We are delighted to be accepting Study Abroad applications for 2024/2025.

If you choose the beautiful and historic city of Newcastle as your Study Abroad destination, you'll have a unique opportunity to experience university life in the Northeast of England and to study at an award-winning Russell Group institution famous for academic excellence.

Please read through this document carefully as the information included will be useful in guiding you through the application process and preparing you for your upcoming Study Abroad adventure at Newcastle University!

Please contact us with any questions at: [studyabroad@ncl.ac.uk](mailto:studyabroad@ncl.ac.uk) We look forward to receiving your application!

## Key Terms

Here are **explanations** for some of the key terms used throughout these guidelines:

### Study Abroad

Spending a semester or full academic year at Newcastle University as part of a degree programme in your home country.

### Semester 1/Semester 2

Semester 1 is sometimes referred to as Fall Semester and starts in September. Semester 2 is sometimes referred to as Spring Semester and starts at the end of January. Study Abroad students can join us for one of these semesters or stay the entire academic year.

### Academic Transcript

This is an official university document that lists the classes/ modules you have taken. We will ask to see a transcript from your home university as part of the Study Abroad application process. We will also issue you a transcript on completion of your Study Abroad experience here at Newcastle to document the modules you have completed.

### Module

At Newcastle University, the term 'module' simply means a class. Study Abroad students normally take three or four modules per semester, and we offer around 900 different modules across a diverse range of subjects. Modules differ in terms of level and credit value. Please refer to our Study Abroad Module Catalogue for more information.

### Visa

A UK visa is the authorizing document that gives worldwide citizens the right to enter, stay temporarily or live in the UK. This can be a passport stamp, or a document given by a UK consulate/ embassy in your country of origin.

# Areas of Study

We offer modules from the following areas of study:

## Faculty of Humanities and Social Sciences

Architecture, Planning & Landscape  
Arts and Cultures  
Business and Finance  
Education, Communication and Language Sciences  
English Literature, Language and Linguistics  
Geography, Politics and Sociology  
History, Classics and Archaeology  
Law  
Modern Languages  
Philosophical Studies

## Faculty of Science, Agriculture and Engineering

Computing  
Engineering  
Mathematics, Statistics and Physics  
Natural and Environmental Sciences

## Faculty of Medical Sciences

Biomedical, Nutritional & Sports Sciences  
Psychology  
Pre-Med





# Application Guidance

Most students begin and complete their applications between February and September. Please be aware of our application deadlines. If you require a deadline extension, contact the [Study Abroad Team](#) well in advance.

**Semester 1 (Fall) Application Deadline:** 31<sup>st</sup> May 2024

**Semester 2 (Spring) Application Deadline:** 31<sup>st</sup> October 2024

## Eligibility

To be eligible for the Study Abroad programme at Newcastle University you must:

- Have studied for **at least a year** at your home university prior to enrolment at Newcastle.
- Be **currently enrolled** at your home university.
- Be in good **academic standing** (equivalent to GPA of 2.8).
- Have IELTS level 6.5 or higher (or equivalent certificate) if you are a non-native **English** speaker.

If you have questions about your eligibility status, please don't hesitate to get in touch with the [Study Abroad Team](#).

## Fees

Unless your home institution has an exchange partnership with us, Study Abroad students are required to pay tuition fees to attend Newcastle University. Our Study Abroad fees can be found on the website. Students either pay tuition fees to Newcastle University directly or have an arrangement where their home university pays the fees on their behalf.

# Application Guidance

## Completion of Online Application

To apply for Newcastle University's Study Abroad Programme, please use our online application system.

### [APPLY TO STUDY ABROAD](#)

As part of the application process, you must create an account, provide us with answers to various questions and also share some supporting documentation. Please finish reading these Application Guidelines before starting your application.

## Supporting Documentation

Your application must be accompanied by all of the **supporting evidence** requested on the form:

- Transcript(s) of studies from your home institution
- English Language Certificate – if English is not your native language
- Personal Statement – a piece of writing explaining why you wish to Study Abroad at Newcastle University. Please include what you hope to achieve and what you can contribute to our university community. Aim for between 500 to 800 words.
- Provisional module choices – suggestions of the classes you'd like to take in Newcastle
- Image of the passport page showing your personal details
- Examples of work/portfolio (for Fine Art and Architecture only)





# Application Guidance

## Module Choices

At Newcastle University, classes are called ‘modules’. Students typically study three to four modules each semester. Modules carry different amounts of academic credit and a full course-load at Newcastle University is 60 credits.

We have a specially designed online [Module Catalogue](#) for Study Abroad and Exchange students. It is important that you read the [Module Catalogue Guidance Notes](#) before referring to the Module Catalogue as it explains the terminology used and indicates any exclusions.

Study Abroad students may choose modules across different Schools (in different subject areas) and can select based on individual preferences and academic requirements. We do ask students to indicate module choices to us at the application stage, but students should be aware that all selections are subject to potential timetabling clashes and module leader approval. It isn’t until students arrive on campus that they formally register for modules. If you need help selecting modules at the Application stage, please do not hesitate to contact the [Study Abroad Team](#) to ask for advice.

## Application Decision

We review applications on a rolling basis. We aim to provide applicants with our selection decision within three weeks of receiving your application. Successful applicants are asked at this stage to formally accept our offer to study with us but will not be asked to provide any form of financial deposit. Tuition fees are to be paid as you begin your programme of study.



# Timeline – Semester 1 Only

Here are some of the **key dates** to remember for your application and academic timeline if you are planning on studying with us for Semester 1 (Fall) only.

Study Abroad students should be aware that while ordinarily Newcastle University's Fall semester runs over Winter break and into January, we do allow students to return home in December and undertake 'Alternative Assessments' in order to complete their studies early. There is no requirement to stay or return to Newcastle in January because we appreciate for many students, they will be resuming studies in their home country.



31 May 2024

## Semester 1 application deadline

The deadline for submitting your online application if you are planning to study for Semester 1 (Fall) only.



10 – 13 September 2024

## International Welcome Week

A week of activities designed to help international students get settled into Newcastle and meet new people.



23 September 2024

## Semester 1 classes begin

The teaching start date for Semester 1 (Fall).

10 September 2024

## Recommended arrival date

We recommend that you arrive on **Tuesday** of this week so that you can take part in our International Welcome Week. Travel should **not** be booked until dates are confirmed in writing.



16 – 20 September 2024

## Freshers' Week

A week full of social events, fairs and administrative tasks to help all new students get settled in, make new friends and get ready to start their classes.



13 December 2024

## Semester 1 classes end

The teaching end date for Semester 1 (Fall).





# Timeline – Semester 2 Only

Here are some of the **key dates** to remember for your application and academic timeline if you are planning on studying with us for Semester 2 (Spring) only.



**31 October 2024**

## Semester 2 application deadline

The deadline for submitting your online application if you are planning to study for Semester 2 (Spring) only.

**20 January 2025**



## Recommended arrival date

We recommend that you arrive on **Tuesday** of this week so that you can take part in the International Welcome Week. Travel should **not** be booked until dates are confirmed in writing.



**20 – 24 January 2025**

## International Welcome Week

A week of activities designed to help international students get settled into Newcastle and meet new people.

**27 January 2025**



## Semester 2 classes begin

The teaching start date for Semester 2 (Spring).



**21 March 2025**

## Classes end for Spring Break

Students use this break for travelling, socialising, relaxing and preparing for any upcoming exams and assignments.

**21 April 2025**



## Classes resume after Spring Break

Spring Break ends and classes will continue for the rest of Semester 2.



**6 June 2025**

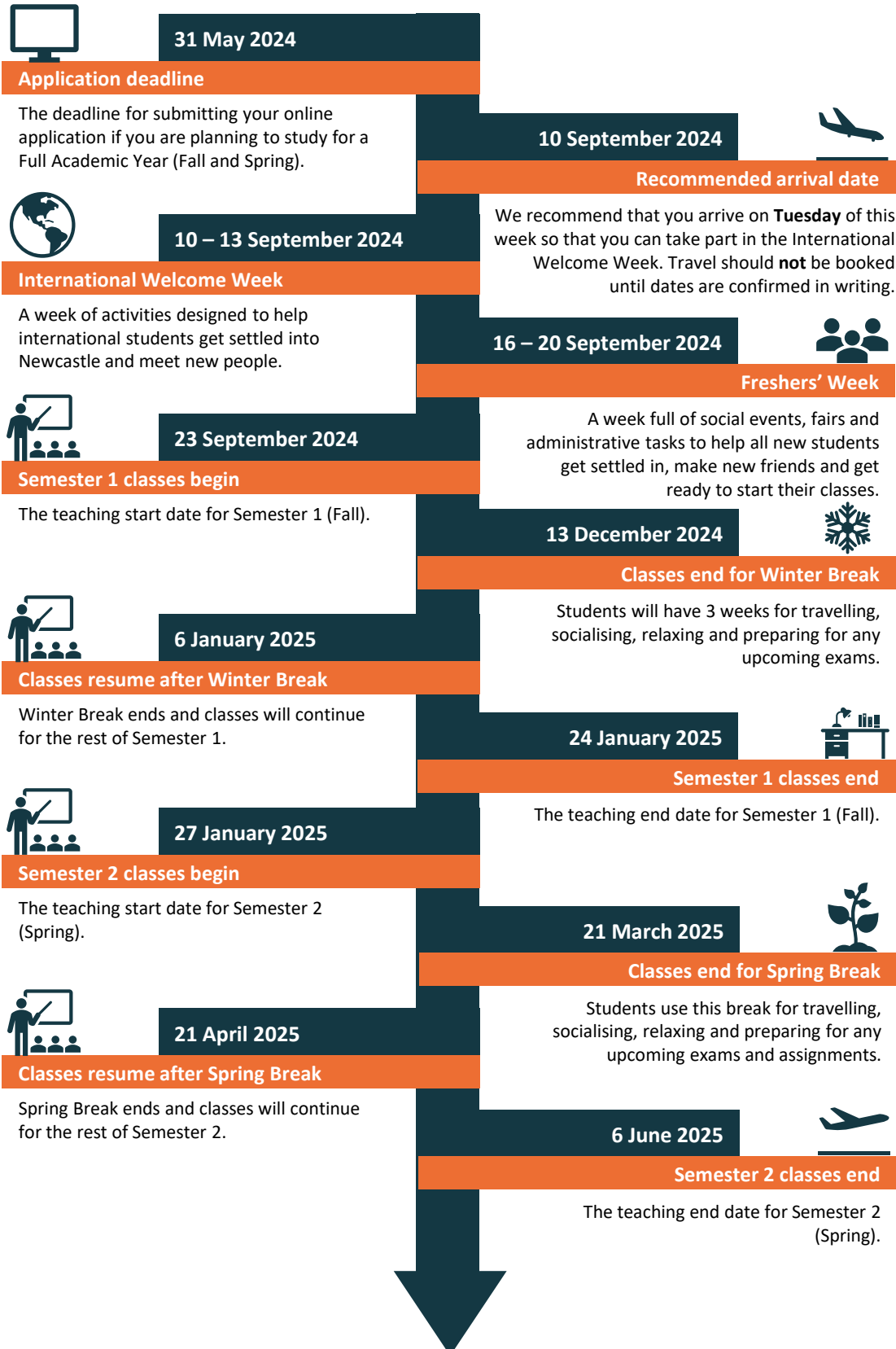
## Semester 2 classes end

The teaching end date for Semester 2 (Spring).



# Timeline – Full Year

Here are some of the **key dates** to remember for your application and academic timeline if you are planning on studying with us for a **Full Academic Year (Fall and Spring)**.



# English Language Requirements

If English is not your native language, you will need to satisfy our English language entry requirements, which will depend on your country of origin and education. Please note that our language entry requirements are **subject to review and change**.

In most cases, you will need an overall score of IELTS 6.5 or equivalent. If you require a Student Visa, you need at least IELTS 5.5 or equivalent in each of the four sub-skills:



writing



reading



speaking



listening

Examples of other English language qualifications that we accept include PTE62 (or 51 in all four components of test with a Student Visa) or a TOEFL iBT score of 90 (or Reading: 18, Writing: 17, Listening: 17, Speaking: 20 with a Student Visa).

The English test must have been taken within **2 years** of the course start date. If you have taken or are planning to take an English test that does not appear on our list, you can contact [studyabroad@ncl.ac.uk](mailto:studyabroad@ncl.ac.uk) to check if we will accept it.

The following exceptions apply:

- **Norwegian nationals** may apply with Norwegian High School English Level 4.
- Students from **Hong Kong** or the **National University of Singapore** do not need to take an additional English language test, including students requiring a Student Visa.
- Students from **Japanese exchange partners** can apply with an IELTS of 6.0

More information about our English language requirements can be found [here](#).



# Visa Regulations

## Applying for a Visa

The Study Abroad team at Newcastle University will issue students with the necessary documents required to enter the UK as a student, but it is your responsibility to check if you need to apply for a visa before you travel.

If you are coming to Newcastle to study for one semester only, you may need to apply for a Standard Visitor Visa before you travel to the UK. Most international students coming to Newcastle to study for one academic year will require a Student Visa. Please check [here](#) to see if you need a visa. You should carefully check what you need and research the cost, requirements and timescales.

If your application to Study Abroad with us is successful, the [Study Abroad Team](#) will send you an acceptance letter that you will use to apply for a visa.

## Right to Work

You may or may not have the right to work in the UK as a student and this will depend on your immigration status. If you need additional guidance on UK immigration, please see:

<http://www.ncl.ac.uk/international/visa>

<http://www.ukcisa.org.uk/Information--Advice>



# Arrival Dates

For students joining us in September there are two weeks of welcome activities for you to get involved with before classes start. For students joining us in January, there is a single week of activities prior to starting class.

We recommend students arrive in Newcastle on the **Tuesday of *International Welcome Week***; however, **students are advised NOT to book travel until the Study Abroad Team confirms recommended arrival dates in writing.**

Semester 1 (Fall) *International Welcome Week*: Tuesday, 10th September - Friday, 13th September 2024

Semester 2 (Spring) *International Welcome Week*: Monday, 20th January - Friday, 24th January 2025



## International Welcome Week

Our *International Welcome Week* programme has been designed to support new international students as they adjust to their new life in Newcastle. *International Welcome Week* runs in **September for Semester 1** students and in **January for Semester 2** students. For those flying into Newcastle Airport during designated times, staff will be there to provide a warm welcome and to provide transport to your accommodation.

During *International Welcome Week* there will be:

- Talks to help prepare you for your upcoming studies.
- Sessions to introduce you to the local area and surrounding region.
- Opportunities to socialise and meet new students.
- Fun activities and events to keep you busy while you settle in.
- Invitation to connect with your university 'buddy' through a peer support scheme we organise.
- Workshops where you will officially register for modules/classes.

Click [here](#) for our dedicated website which is updated before the start of each new semester with information for new Study Abroad students.

# Arriving into Newcastle

Our nearest airport is **Newcastle International Airport** (15 minutes by car to campus, 20 minutes by Metro to Campus).

Our nearest train station is **Newcastle Central** (5 minutes by car to campus, 5 minutes by Metro to Campus).

If you arrive within the designated times during *International Welcome Week*, Newcastle University staff will be waiting for you at the airport arrivals lounge and will help transport you to your accommodation. More information on how to take advantage of this service will be provided to you in the pre-departure period.

If you arrive outside of these times or into the train station or another UK airport, you must organise transportation to your accommodation independently. Please try to plan this ahead of your arrival and seek advice from the [Study Abroad Team](#) if you need it.

Please click [here](#) to find out more information about methods of getting to Newcastle from other UK airports



# Accommodation

Applicants who wish to apply for University accommodation can apply online but only after they have been offered a place of study at Newcastle University. This will be in Summer for students arriving in September and in Autumn for students arriving in January. We have a wealth of accommodation options in Newcastle, varying in price, style and location.

Student rooms are designed for single occupancy living and offer a private place to sleep and study. Some rooms have en-suite bathrooms but if not, you'll share a bathroom with approximately 4-6 other students in your 'flat'. You will also share a communal space and kitchen area with your new 'flatmates'. Heating, lighting, water and an internet connection are included as standard.

<https://www.ncl.ac.uk/accommodation/university/>

Housing in Newcastle is amongst the most affordable in England (ranging from **£110 to £165 a week**) so this means you'll have more money to spend on social activities, travel and shopping! Seek advice from the [Study Abroad Team](#) before applying for accommodation as they may be able to provide good recommendations and also help you with the application process.



# Why Newcastle?

## A Cultural City

Newcastle offers a diverse cultural scene, architectural beauty, history and a world-famous nightlife. The city has excellent transport links and London is only a 3-hour journey away by train. From the city centre, it is only a short bus or train ride to the countryside, where you can explore the area's breath-taking scenery and coastline.

## A Sporting City

This city is not only home to Newcastle United Football Club and St. James' Park, but also the Falcons and Eagles; top-tier rugby and basketball teams. Newcastle University is also one of the UK's top universities for sport, offering fantastic facilities and a range of athletics clubs. Find out more [here](#).

## A Student City

Newcastle is ranked as one of the UK's top student cities, offering a range of culture and entertainment. Newcastle University has been rated 7th in the UK for overall student experience and 4th in the UK for social life (The Times Higher Education Student Experience Survey 2018), reflecting our high levels of student satisfaction.





# Quick Fact Sheet

## Completion of Online Application

Start your online application to Study Abroad at Newcastle, England [HERE](#).

We do not ordinarily accept Study Abroad applications that are submitted after the publicized deadlines. However, in extenuating circumstances, we may provide applicants with deadline extensions if they request permission in advance from the Study Abroad Team.

**Semester 1 (Fall) Application Deadline:** 31<sup>st</sup> May 2024

**Semester 2 (Spring) Application Deadline:** 31<sup>st</sup> October 2024

## Supporting Documentation

Applications must be accompanied by all of the supported documents requested:

- English Language Certificate (if English isn't your first language)
- Recent Academic Transcript from home institution
- Personal Statement (between 500 and 800 words in length)
- Provisional module choices
- Colour scan or copy of Passport (open on the page containing personal details).

## Selecting Modules (Classes)

Students choose to study three or four modules (classes) over the semester. You can access our list of classes via our online Module Catalogue: <https://www.ncl.ac.uk/mobility/experience-newcastle/module-guidance/#choosingmodules>

Applicants should check with their home school to find out if any academic requirements need to be fulfilled during their time abroad. NOTE: Students cannot register for classes prior to arrival in Newcastle.

## Acceptance

We aim to provide feedback to applicants within 3 weeks of receiving a complete submission. Selection decisions and acceptance documents will be sent to successful applicants by email or via the applicant portal.

## Term Dates

Fall semester students are normally expected to arrive in Newcastle in mid-September and return home in either December or January. Spring semester students are normally expected to arrive in Newcastle in mid-January and return home in early June.

## Accommodation

Study Abroad students will be invited to apply for accommodation once they have formally accepted a place to study at Newcastle University. We guarantee accommodation to all fee-paying Study Abroad students. Where possible, the Accommodation Team will take into account your preferences for location and room type; however, they are not always able to allocate you to your selected accommodation. The accommodation guarantee is an offer of a room that may be university-owned, managed partnership or occasionally with a local accommodation provider.

## Further Information

The [Study Abroad pages of the website](#) provide applicants with lots of information regarding our eligibility criteria, the programmes we offer and what you can expect from the social and academic experience in Newcastle. Applicants can also contact the team at [studyabroad@ncl.ac.uk](mailto:studyabroad@ncl.ac.uk)